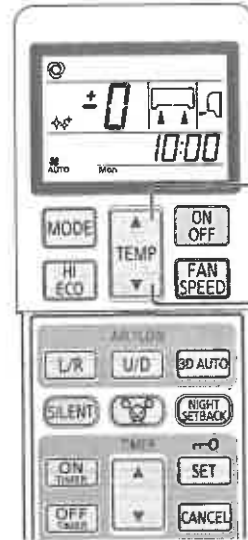


# REMOTE CONTROL - MUST BE POINTED AT EACH HEATER AND INSTRUCTIONS SET FOR EACH INDIVIDUALLY

## Temperature adjustment during AUTO mode

- Default preset temperature during AUTO mode is 24°C for both cooling and heating mode. However, it can be adjusted (Minimum 18°C, Maximum 30°C) using ▲ button or ▼ button.



### 1 Press the "▲ or ▼ (TEMP)" button.

When it is a little cold

Press the ▲ button.

- Each time the ▲ button is pressed, the switch over occurs in the following order -6 → -5 → ..... -1 → ±0 → +1 ..... +6.

When +6 is indicated, even if the ▲ button is pressed, the indicator does not change.

When it is a little hot

Press the ▼ button.

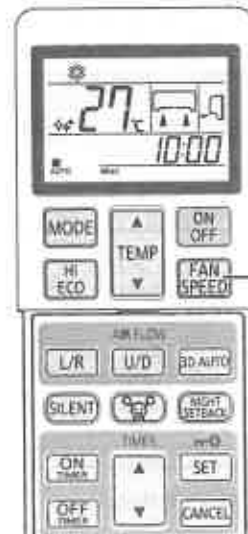
- Each time the ▼ button is pressed, the switch over occurs in the following order +6 → +5 → ..... +1 → ±0 → -1 ..... -6.

When -6 is indicated, even if the ▼ button is pressed, the indicator does not change.

Remote Control display													
Setting temp.(°C)	-6	-5	-4	-3	-2	-1	±0	+1	+2	+3	+4	+5	+6
	18	19	20	21	22	23	24	25	26	27	28	29	30

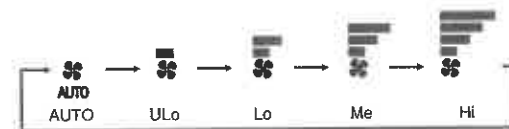
## FAN SPEED

- The FAN SPEED can be set without DRY mode.



### 1 Press the FAN SPEED button.

Each time the button is pressed, the fan speed changes.

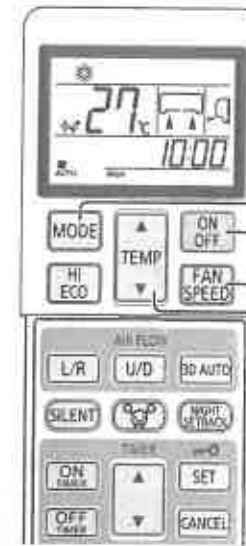


Operation capacity by your choice	FAN SPEED
Set automatically by microcomputer	AUTO
Silent operation	UL0
Energy-saving operation	Lo
Standard operation	Me
Powerful operation with high capacity	Hi

NOTE

- When FAN SPEED is changed from Hi to Lo or UL0, the sound of refrigerant may be heard.
- When COOL mode is used when outside temperatures are low, the FAN SPEED may change automatically to protect the air-conditioner.

## COOL/HEAT/DRY/FAN mode operation



### 1 Press the MODE button.

Set to a required mode.

\* (COOL), ☀ (HEAT), ☹ (DRY), # (FAN)

### 2 Press the ON/OFF button.

### 3 Press the TEMP button.

Press ▲ or ▼ button for the preferred temperature.

Recommendation

COOL	HEAT	DRY	FAN
26 °C - 28 °C	22 °C - 24 °C	24 °C - 26 °C	—

### 4 Press the FAN SPEED button

Set the fan speed as preferred.

A fan speed cannot be set under Dry operation.

Airflow direction adjustment procedure. Page 16

NOTE

- In case air is not blown out, when starting the heating operation. Page 30
- The operation mode can also be set or changed when the air-conditioner is not in operation.

To stop: Press the ON/OFF button.

## Air-conditioner operation temperature range

- Use within the following operational range. Operating outside of this range may result in the protection devices being activated, preventing the unit from working.

	COOL mode operation	HEAT mode operation
Outside temperature	Approximately -15 to 46 °C	Approximately -15 to 24 °C
Inside temperature	Approximately 18 to 32 °C	Approximately 10 to 30 °C
Inside humidity	Below approximately 80% The long-term use of the unit with a humidity level exceeding 80% may result in condensation forming on the surface of the indoor unit, leading to water drops.	

## Characteristics of HEAT mode operation

### Mechanism and capacity of HEAT mode operation

- The unit draws heat from the cold outside air, transfers it to indoors and heats the room. As a characteristic of heat pump system, the heating capacity reduces when the outside air temperature gets colder.
- It may take some time to supply hot air after turning on the air-conditioner.
- If the outside temperature becomes extremely low, it would be better to use an additional source of heating.

### Defrosting

If the outside temperature becomes low and humidity is high, the heat exchanger in the outdoor unit may frost over, which prevents efficient heating. If this happens, the automatic defrost function is activated and the heating operation stops for 5 to 15 minutes during defrosting.

- Both indoor and outdoor fans stop and the RUN light blinks slowly (1.5 seconds ON, 0.5 seconds OFF) during defrosting.
- The outdoor unit may release some steam during defrosting. This is to help the defrosting process and is not a defect.
- The HEAT operation resumes as soon as defrosting has been completed.